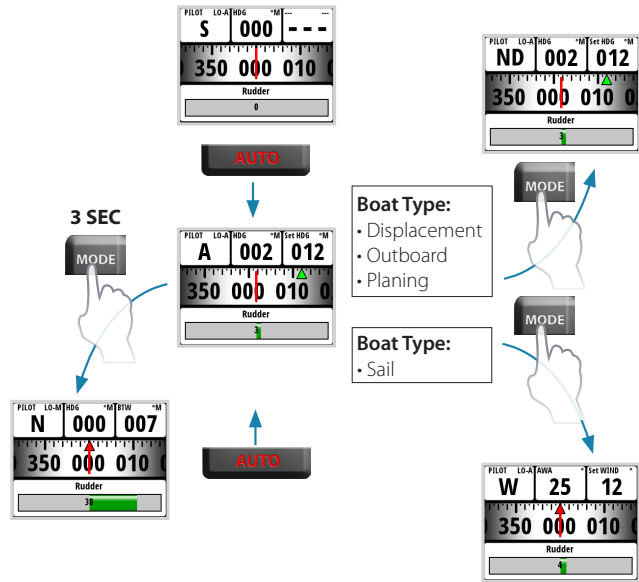


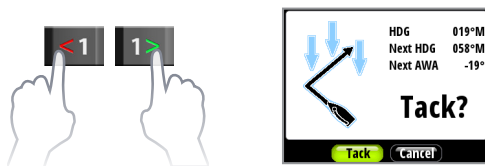
## Changing the Pilot mode



Mode Symbol	Function / Mode
S	Standby
A	Auto (Compass)
W	Wind
N	Navigation
ND	No Drift
NFU	Non Follow Up (Power steer)

## Tack & Gybe in Wind mode

To tack or gybe in Wind mode press both 1° course keys on the Pilot controller.



## Triton Display & Pilot Controller Quick Reference Guide

**B&G**  
EN



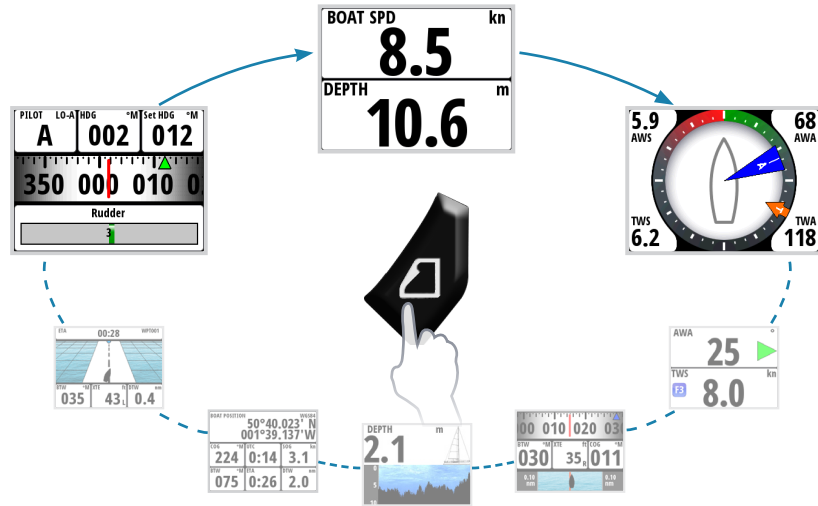
### Display Keys

	Menu / Enter / Lighting: Used to enter the main menu, select sub menus and confirm selection. Note: Press and hold the Enter key for 3 seconds takes you directly to the display setup lighting level screen. If the lighting level is set below 5 it will automatically increase to 5. Use the up and down keys to set the desired level and press Enter to confirm.
	Page: Scrolls through the eight default display pages and navigates back a step in menus. Note: the eight default display pages including the autopilot page can be customized to display the required data.
	Directional keys: Scrolls up and down through selected menus / set values.

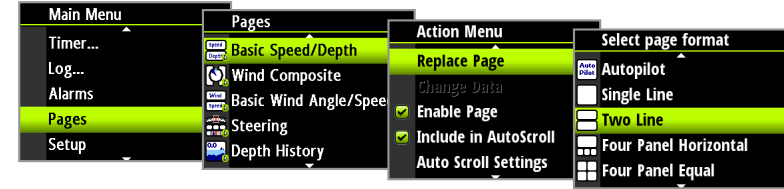
### Pilot Controller Keys

	Mode: Changes the Pilot mode. When the Pilot's boat type is set to Sail and Auto mode is engaged pressing the mode key will change the Pilot to Wind mode. If the Pilot is set for any other boat type and the Pilot is in Auto mode pressing the mode key will enter the Pilot into No Drift mode. For all boat types, when in Auto mode a long key press of the mode key will enter the Pilot into Navigation mode which will require confirmation via the display before it is engaged.
	STBY: Disengages the autopilot. Places the autopilot into Standby mode.
	Left 1°: Adjust the set course or wind angle 1 degree / steer to Port in Non Follow Up mode. When pressed in Standby mode this will enter the autopilot into Non Follow Up mode.
	Right 1°: Adjust the set course or wind angle 1 degree / steer to Starboard in Non Follow Up mode. When pressed in Standby mode this will enter the autopilot into Non Follow Up mode.
	Left 10°: Adjust the set course or wind angle 10 degrees / steer to Port in Non Follow Up mode. When pressed in Standby mode this will enter the autopilot into Non Follow Up mode.
	Right 10°: Adjust the set course or wind angle 10 degree / steer to Starboard in Non Follow Up mode. When pressed in Standby mode this will enter the autopilot into Non Follow Up mode.
	Auto: Engage the autopilot / Switch the autopilot to Auto mode.

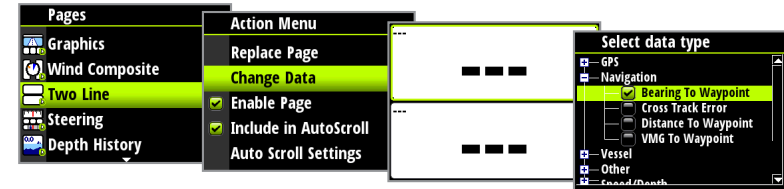
## Page navigation



## Replacing a data page



## Creating custom pages



## Menu navigation



## Disable / Enable a data page



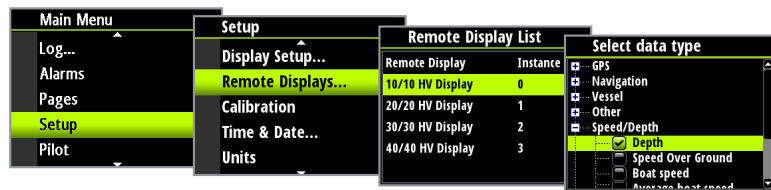
## Back lighting



## Start / Stop timer



## Remote display data selection



## Reset trip log

